

VirtualWork




A newsletter for customers and friends of IES

Canadian Concrete

More IES products have Canadian specifications

Tools with Support

IES engineers worked hard this year to update and expand our concrete design capabilities to help our neighbors to the north. We have added our Canadian concrete provisions to three products:

-  [VisualFoundation](#) - Footings, Grade Beams, Column-Piers
-  [ConcreteBending](#) - Slabs, Beams, Walls
-  [ConcreteSection](#) - CSA Phi Factors

CSA A23.3-14

These products now offer slab design, beam design, and/or column-pier checks per the latest specification from CSA. We check the applicable limit states and let you specify SI rebar sizes and use SI concrete strengths.



NBC 2015

Where applicable, the products have built-in National Building Code support for load combinations. (The load combination system is also customizable to meet any specific needs you may have.)

VisualAnalysis?

Even [VisualAnalysis](#) 18.0 includes Canadian design checks per CISC, and NAS/AISI for steel and cold-formed steel, respectively. We fully expect to include the Canadian concrete checks for beams, columns, and slabs into the next release of VisualAnalysis, due in the first half of 2019.

Quick Products (CSA A23.3-04)

QuickRWall and QuickFooting have long provided the Canadian concrete provisions. These products are still using the 04 code, but we hope to get them updated soon.

[\[back to top\]](#)

VisualFoundation 9.0

Design of piles and column-piers

Upgrade Available

Foundation design just got better. As one of our most popular products, VisualFoundation has been helping engineers with combined footings, mat foundations and pile caps for years. This year we have improved graphics, improved performance, and new design capabilities that will get your projects out the door faster and more accurately than ever.

Major New Benefits

- Structural design of piers (concrete)
- Structural design of piles (wood, concrete, or steel)
- Canadian CSA A23.3-14 design of concrete
- Graphic wire-frame in picture view
- Battered piles
- Pile sliding resistance
- Graphics performance 20x faster
- Analysis 12% faster
- Plate design 1.5x faster

Reasonably Priced

VisualFoundation works with VisualAnalysis in a complementary fashion, or as a completely stand-alone tool. Get started for just \$950.

[\[back to top\]](#)

2019 License Costs

Two months to buy at 2018 Prices

Buy Now to Save

If you are thinking about purchasing additional licenses or IES products you do not currently license, now is the time. We are announcing 2019 price increases today that will take effect on or about January 1, 2019.

Generally we are increasing the **new price** for single-user licenses by about 5%. Please note that **we are not raising maintenance fees for existing customers on their current licenses until 2020**, only for any new licenses purchased next year.

Examples	2018	2019
VisualAnalysis Advanced Single User	\$4375	\$4590
VisualAnalysis Advanced Maintenance	\$640	\$690
ShapeBuilder Single User	\$620	\$645

Subscription Only

Starting in 2019 all **Suite** and **floating-network** purchases will be subscription-only licenses. Advantages of the Suite licenses include a single product key (activation) to unlock multiple products, and combined billing.

Quick products are also moving to a subscription-only licensing model. This is because we have not been consistent with releasing upgrades on a regular schedule.

Details

The complete proposed prices for 2019 are [here](#), but are subject to change between now and January 1, 2019.

[\[back to top\]](#)

Regional VA Training

Get Face-to-Face with IES

Are you looking to improve your skills with VisualAnalysis? How about earning some PDH credits? Maybe you want a little weekend getaway to some place fun? With IES Training all of these goals are within easy reach.

We have proposed a number of [regional training classes](#) in 2019. Please let us know if you find one of them interesting. We are not asking for a firm commitment or the registration fee yet.

- **Mpls/St. Paul, MN - Nov. 27, 2018**
(3 seats remaining)
- **Las Vegas, NV -- Jan 18, 2019**
- **Miami, FL --, Mar 22, 2019**
- **New Orleans, LA -- Apr 8, 2019**
- **San Francisco, CA --Apr 18, 2019**
- **Boston, MA -- May 10, 2019**
- **Chicago, IL --, May 23, 2019**
- **New York City, NY -- Jun 10, 2019**

Please email sales@iesweb.com to pre-register. We will then let you know when it is time to officially register, or if the class has been canceled.

[\[back to top\]](#)

Meet Colter

IES, Inc. is Growing to Meet Your Needs

IES is pleased to welcome Colter Roskos, Ph.D. to our research and development staff. Colter was born and raised in Northwest Montana just minutes away from beautiful Glacier National Park. Growing up in the Rocky Mountains gave him a love for the outdoors and he enjoys skiing, hiking, biking, and hunting.



He obtained a BS and MS in Civil Engineering (with a focus in structures) from Montana State University in 2009 and 2011, respectively. After working for a structural engineering consulting firm for two years, Colter went back to school and recently obtained a PhD from the University of Texas at Austin. His research was sponsored by the Texas Department of Transportation and focused on stability bracing of curved bridges during construction with both experimental and computational components. Colter is excited to help provide the tools for structural design engineers by being a part of IES. Also, Colter and his wife are happy to be back in Montana so that they can raise their newborn twin boys in the Rocky Mountains.

[\[back to top\]](#)

ConcreteBending 5.0

Environmentally Friendly

ACI 350-06 Water Tanks

ConcreteBending will now help you design tank walls for civil/environmental concrete structures. The focused nature of this tool lets you model a single wall of the tank extremely fast. Include openings, stiffeners, and whatever boundary conditions you need.

Now in Beta Testing

Now is a great time for all IES customers to download and try this tool--free. We are looking for feedback on how to make this a great addition to your toolbox. Check out the new features and tell us what you think. Please run the [beta-test version](#) before it expires.

Price Increase Coming

If you think you might use this tool, we are offering it at the 4.0 price of \$395 through December 31, 2018. After that, the price is **jumping to \$595** to reflect the new capabilities and performance.

[\[back to top\]](#)

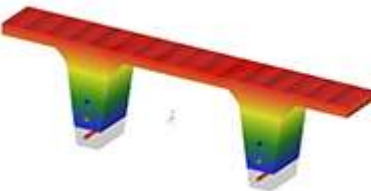
ConcreteSection 2.0

Now in Beta Testing

If you work with concrete, then you could use ConcreteSection 2.0. It offers the ability to investigate the cracked behavior, stress & strain, and capacity of virtually any kind of concrete shape.



Use it for walls, beams, and shear walls. It handles openings, embedded structural steel shapes and any kind of reinforcement pattern.



Try it Today

ConcreteSection 2.0 is available in a [customer preview mode](#) for testing. You do not need a license for the next month.

[\[back to top\]](#)

[Meet IES, Inc.](#) [Disclaimer](#) [Privacy Statement](#) [Trademarks](#)

Copyright © 1994-2018, IES, Inc. All rights reserved.